

Hafele Arret Bench Top Connector User Guide.



Introduction

Overview

- The “Hafele Bench Top Connector” package from Solid Setup adds the Hafele Connector 262.40.737 to Cabinet Vision Solid.
- It provides drilling for the Cabinet parts, for CNC output.
- *(You can change the drilling diameter via UCS public Variable.)*
- The bracket is added as a separate part and material for reporting purposes.
- The material description contains the Hafele order number after the # symbol.

Included in This Package

User Created Standards

- { BENCHCLIP } -- Arret Cab Attributes Adds Attribute to Cabinets
- { BENCHCLIP } -- Arret Adds Hafele Bench Top Connector

Library

- CVS Hafele.cvc Cabinet Vision Catalog of Hafele Library parts

Part

- BRKT Bracket type part used for Connector

Miscellaneous Material:

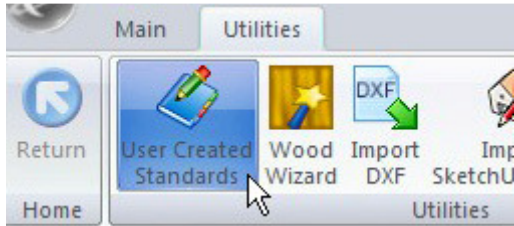
- Benchtop Arret Conn Wte Benchtop Arret Connector # 262.40.737

Setup

UCS Public Variables

- The UCS Public Variables are used to configure this package

- To change these variables go to the Utilities – Edit User Created Standards from the Room Plan or Elevation views



- Then click on the { BENCHCLIP } -- Arret “ UCS. The Public Variables are at the top right of the screen.

Public Variables	
Hole Diameter	Imp(10)
Clip Ends?	0
Clip Vertical Rails?	0

- Hole Diameter** – This is the diameter of the hole in the cabinet parts. **(Note that if you are changing this to the 15mm Arret you will need to change the code in the misc material to 273.93.764).**
- Clip Ends?** – To Add Clips to front of ends as well- change value to 1.
- Clip Vertical Rails?** – To Add Clips to back of front vertical rails as well- change value to 1.
- If you are using imperial sizes simply replace the whole **imp()** with the imperial measurement instead.
- E.g.: **Imp(3)** might become **1/8**

Once you have changed these values to your requirements, close the UCS editor.

Tools Required

- The drill diameter you choose in the UCS Public Variables above is required for this package to work. You must have this tool diameter in your tool catalog and in your machine.

Hafele Connector Usage

Room Attributes.

- Bench Clips** TRUE/FALSE Turns on connectors in whole room
- Bench Clips Thru Bck** TRUE/FALSE changes hole to thru hole on backs only in whole room

Cabinet Attributes.

- Bench Clips** AUTO/TRUE/FALSE Controls connectors in cabinet (AUTO means use room setting)
- Bench Clips Thru Bck** AUTO/TRUE/FALSE changes back holes to thru holes (AUTO means use room setting)

Back Attributes.

- Bench Clip** TRUE/FALSE
- Bench Clip Pos Lh** Position of Lh clip
- Bench Clip Pos Mid1/2** Position of Middle clips if 3 or more clips on wider back

Bench Clip Pos Lh Position of Rh clip
Bench Clip Qty(1-4) Quantity override 1 to 4 (AUTO means automatic based on part size)

End Attributes.

Bench Clip TRUE/FALSE
Bench Clip Pos Position of clip (150 from front of cabinet)
Bench Clip Thru? TRUE/FALSE changes end holes to thru holes if required

Rail Attributes. (Front Vertical Rail)

Bench Clip TRUE/FALSE
Bench Clip Pos Lh Position of Lh clip
Bench Clip Pos Mid1/2 Position of Middle clips if 3 or more clips on wider rail

Bench Clip Pos Lh Position of Rh clip
Bench Clip Qty(1-4) Quantity override 1 to 4 (AUTO means automatic based on part size)
Bench Clip Thru? TRUE/FALSE changes rail holes to thru holes if required

Package Exclusions

There may be some items shown in various images contained in this document which are not included in this Package. Any items not specifically mentioned in this guide are part of our other packages which are sold separately.

See our website for more detailed information on these packages.