

Vent Slots User Guide.



Introduction

Overview

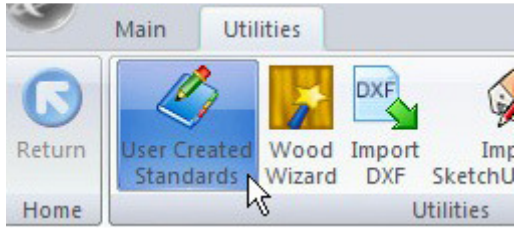
- The 'Vent Slots' Package from Solid Setup allows you to add a series of vent routes to parts and slab type doors via attribute, quickly and easily.
- Two sets of slots can be added to each part.
- The following settings can be used to control the Vent slots:
 - Length
 - Width
 - Spacing
 - Quantity
 - Rotation – Horizontal or Vertical
 - X and Y starting position
 - Depth of slots
 - Front or Back Face of part (for non-thru slots)

Default Settings

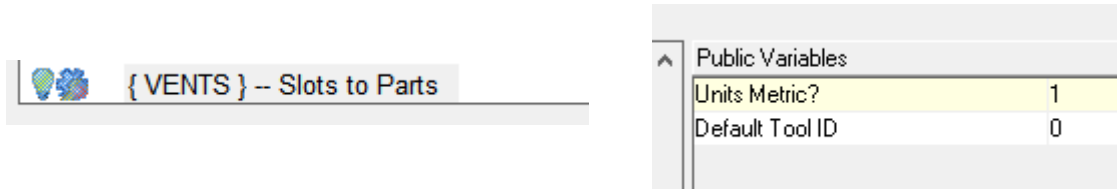
UCS Public Variables

There are Public Variables for the { VENTS } UCS.

To change these variables go to the Utilities – Edit User Created Standards from the Room Plan or Elevation views



Then click on the { VENTS } UCS. The Public Variables are on the top right of the screen:



1. **Units Metric?** **Set to zero for Inches or 1 for mm** (Vent Slot quantity will not work if this value is not set to the correct value)
2. **Default Tool ID** Enter the **Tool ID** of the main tool you use for Vent Slots.

The Tool ID can be changed via attribute for each vent, this just sets the default when the vent is first added.

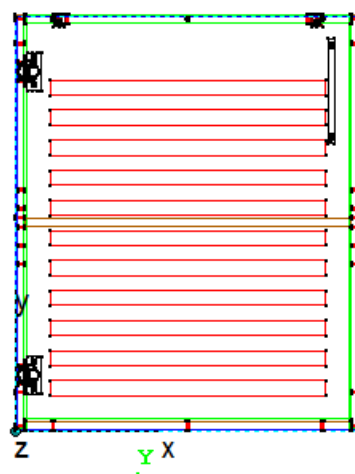
Part Attributes Usage

Functionality

The Part Attributes allows the vents on each part to be controlled.

- Part Attributes are only visible in the sidebar of the Ortho (Smiley) views in the cabinet editor when a **part is selected**, or the sidebar in the part editor.
- **Vent Slots?** attribute will **Show** or **RESET** the remaining **Vent** attributes.

Vent Slots?	True
Vent1 Slots?	True
Vent1 Slot Edit?	True
Vent1 Slot Depth	16.50
Vent1 Slot Fnt Face?	True
Vent1 Slot Length	478
Vent1 Slot QTY	11
Vent1 Slot Rotate	False
Vent1 Slot Spacing	26
Vent1 Slot TOOL	0
Vent1 Slot Width	26
Vent1 Slot X	60
Vent1 Slot Y	60
Vent2 Slots?	False



Part Attribute List:

Prompt:	Value:	Description:
Vent Slots?	False	Shows/RESETS the Vent1 and Vent2 Attributes
Vent1 Slots?	False	Shows/RESETS the Vent1 Attributes
Vent1 Slot Edit?	True	Shows/Hides the following attributes for editing vent 1
Vent1 Slot Depth	16.5	Allows the depth to be altered (Default is thru)
Vent1 Slot Fnt Face?	True	Allows the Face to be swapped (For non-thru decorative vents)
Vent1 Slot Length	478	Length of Slots
Vent1 Slot QTY	11	Quantity of Slots
Vent1 Slot Rotate	False	Vertical or Horizontal direction
Vent1 Slot Spacing	26	Gaps between slots
Vent1 Slot TOOL	0	Choose a particular TOOL by its NC Center ID.
Vent1 Slot Width	26	Width of Slots
Vent1 Slot X	60	X position of 1 st slot
Vent1 Slot Y	60	Y position of 1 st slot
Vent2 Slots?	False	Shows/RESETS the Vent2 Attributes

Note: The TOOL attribute is the tool ID not the Tool number as shown in the NC center!

Vent Slots?	True
Vent1 Slots?	True
Vent1 Slot Edit?	False
Vent2 Slots?	True
Vent2 Slot Edit?	True
Vent2 Slot Depth	16.50
Vent2 Slot Fnt Face?	True
Vent2 Slot Length	478
Vent2 Slot QTY	3
Vent2 Slot Rotate	False
Vent2 Slot Spacing	26
Vent2 Slot TOOL	0
Vent2 Slot Width	26
Vent2 Slot X	60
Vent2 Slot Y	511

